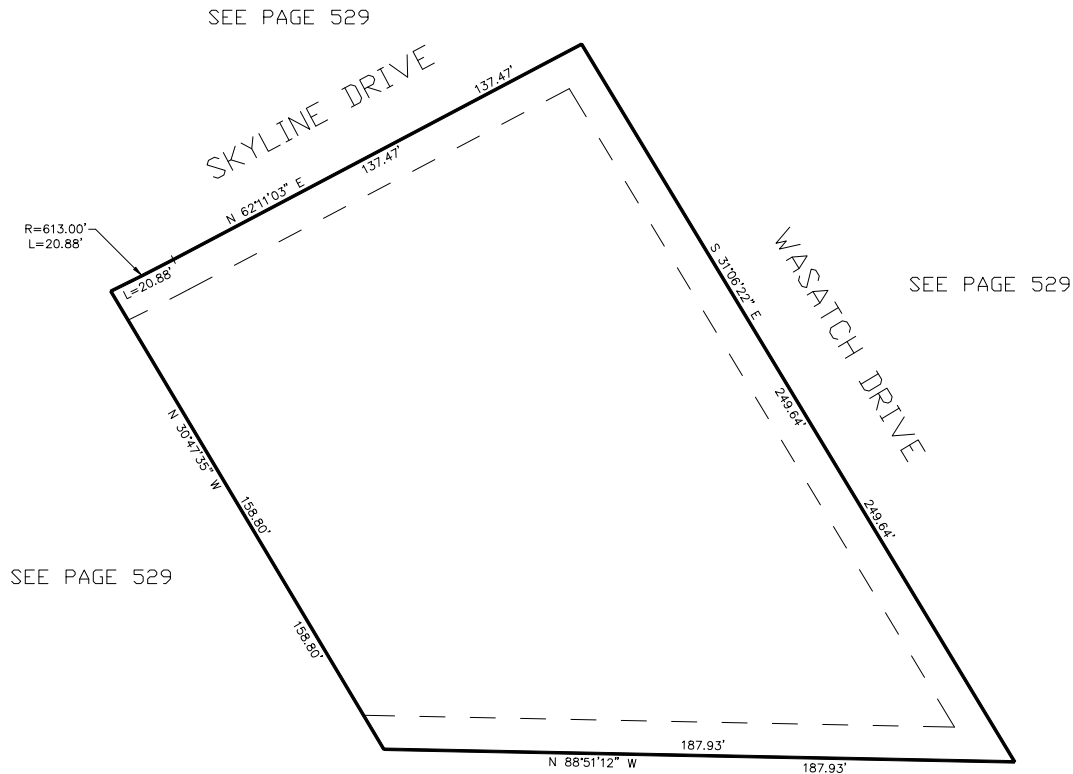


PART OF THE S.E.1/4, OF SECTION 22, T.5N., R.1W., S.L.B. & M.
SKYLINE CONDOMINIUM

IN SOUTH OGDEN CITY
SCALE 1" = 30'

TAXING UNIT: 75



| UNIT NO. | SERIAL NO. | OWNERSHIP |
|-------------|------------|--------------------------------------|
| 1 | 075620001 | SKYLINE PROPERTY INVESTMENTS LLC |
| 2 | 075620002 | J & S NIX HOLDING, LLC |
| 3 | 075620003 | HEALTH SOLUTIONS CHIROPRACTIC LLC |
| 4 | 075620004 | HEALTH SOLUTIONS CHIROPRACTIC LLC |
| 5 | 075620005 | SKYLINE MANAGEMENT OF OGDEN, LLC |
| COMMON AREA | 075620006 | COMMON AREA FOR SKYLINE CONDOMINIUMS |

10' UTILITY & DRAINAGE EASEMENTS EACH
SIDE OF PROPERTY LINES AS INDICATED
BY DASHED LINES EXCEPT AS OTHERWISE
SHOWN.

FOR COMPLETE ENG DATA SEE
ORIGINAL DEDICATION PLAT IN
BOOK 52, PAGE 4 OF RECORDS.